

**Teach How
You Want To Be
Taught**



MINDCHECK Motivation

WWW.MINDCHECKMOTIVATION.COM

FALL, 2010

- Devotion to
EDUCATION
- Passion for
MOTIVATION
- Love of
MAGIC

**INSIDE
THIS ISSUE:**

- Magic in the
Classroom** 2
- Mindcheck
Puzzles** 3
- Looking
Forward** 4

How to Train A Flea

When I mention flea training to my magician friends, they often think about the flea circus displays of old, where fleas are attached to different objects and perform feats of strength and endurance, which, on a human scale, would only be possible for the most skilled and elite of human athletes. But that is



not what I'm talking about. In Zig Ziglar's book "See You at the Top," Zig talks about how to train fleas without any mechanical means or wires. He describes how you put fleas in a jar and seal it with a lid. The fleas will jump and hit the lid of the jar in what seems like an endless head banging session that you would see at a Metallica concert. However, if you wait about 15-20 minutes something quite interesting happens. Once they realize they

can not escape, they stop jumping so high as to not hit the lid. The fleas will jump just under the height of the lid. At that point, you can remove the lid and be certain that the fleas will not jump out. In essence, you conditioned the fleas on how to think and act.

POPULAR QUESTION

The popular way of applying this narrative is to ask: do we condition ourselves in limiting our own abilities? Do we look at ourselves and say: I can never do that, I don't deserve that, I'm not smart or talented enough, etc? Personally, I never thought I could or ever wanted to run a 5K race, but I decided to take the "lid off the jar," and I did it. I never thought I could get up in front of professionals and inspire them, but I do it.

But I see myself more than a motivator, of myself and others, to achieve more than we think is possible.

LOGICAL QUESTION

So the next logical question is this: as business and educational leaders, do we put the

lid on the jar for the people we are responsible for?

In John C. Maxwell's book, "The 21 Irrefutable Laws of Leadership," Maxwell talks about leadership ability as the "lid" that determines a person's effectiveness and the impact they have on their organization.

I take it a step further and talk about being a "10," that we need to be leaders in our environment: be it a school, an office, or at home. That if we are not tens, we limit the people we are in charge of. For example, if a principal is only a 7, most of his/her teachers can only be, at their best, 6's or 7's. Which means, the students can only be 5's or 6's. Because of that principal's lack of effectiveness, the students are only achieving half of their potential of being a TEN.

As professionals, we should never limit ourselves or the people that we are responsible for. Always be a TEN!!!

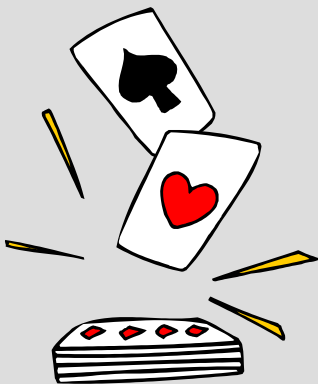
In the next issue, we will discuss how you know when you are a ten and how to stay a ten.



MAGIC
in the
CLASSROOM

Try this trick in
your classroom,
next meeting,
or with friends.

*"Illusion is the first
of the pleasures"*
-Voltaire



Mind Reading— Book Test

Effect: Predict the word chosen by a spectator from a book.

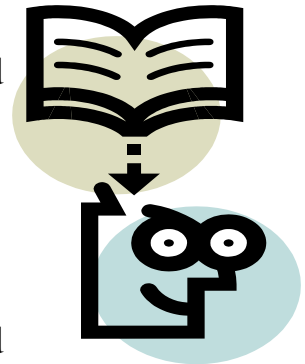
Preparation: Look at page 10 of a book. Count eight lines down. And write down the ninth word in the line. Remember it.

Method: Give the spectator a pencil and a piece of paper. Turn your back and ask them to write down any three digit number (all three digits should be different).

Next, ask them to reverse that number and subtract the smaller from the larger number. Example: if the three digits are 567, they reverse it to 765. They would sub-
tract 567 FROM 765. This would equal 198.

Next, reverse that number and add the two. Example: 198 PLUS 891 equals 1089.

No matter what the original three digit number was, the result is 1089! Ask the spectator to go to the book that you previously looked at, and have them go to the tenth page, eighth line down, and to look at the ninth word in that line. Have them think of the word. As you do your best mind reading routine, write down the word that you remembered. And BANG, you just read their mind.





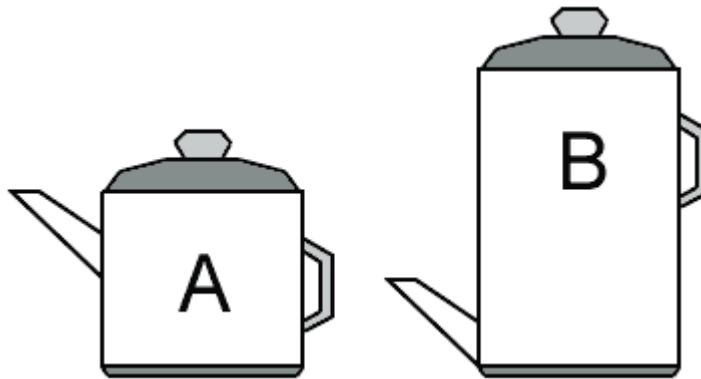
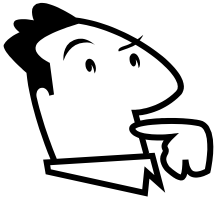
Word Puzzles— Say What You See

MAN
campus

league

Hijklmno

Critical Thinking Puzzle



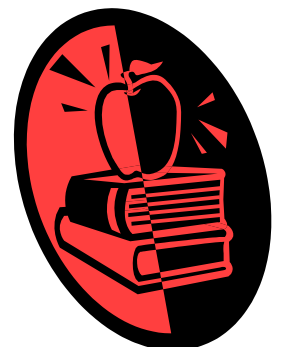
Answers to all puzzles are on Page 4.

If pot A holds 20 ounces of coffee, about how many ounces does pot B hold?

Check Your Thought



Rearrange the letters in the words **NEW DOOR** to make one word.
(Hint: there is only one correct answer).



MINDCHECK MOTIVATION



Teach how you want to be Taught

Feel free to call us at 412-554-2377
or email us at
joe@mindcheckmotivation.com

www.mindcheckmotivation.com

Keep up with us on Facebook

When Joe Vilcheck began a career in education, he started on a path that he never thought he would take. He left a career in environmental consulting to teach at an alternative school for delinquent youth in Western Pennsylvania.

Shortly afterward, he was hired by the Allegheny Intermediate Unit- 3 (AIU3) and began teaching at the Shuman Detention Center in Pittsburgh. Today, Joe is well-known throughout the AIU3, Alternative Education Department, as a veteran teacher of at-risk teens, as a mentor, and as a motivator.

In 2007, Joe received the “Award of Excellence” from the AIU3.

Joe has worked closely with at-risk students in the Shuman Detention Center and at local programs such as the Community Intensive Supervision Program (CISP). Additionally, he has worked for Pittsburgh non-profit social service agencies such as Family Links and Wesley Spectrum. Joe is an active member of both the Society of American Magicians and the Pittsburgh Mentalist Society.

MINDCHECK PUZZLES

SAY WHAT YOU SEE

Big man on campus

Little League

Water (the letters are
H to O...H₂O)

CRITICAL THINKING PUZZLE

10 ounces (about half of pot A).
The amount of coffee is determined by the spout opening. Any more coffee would simply pour out of the spout. Since the spout opening of pot B is half the height of pot A, it is safe to estimate that the amount of coffee in B would be half of A.

CHECK YOUR THOUGHT

The answer is : ONE WORD

